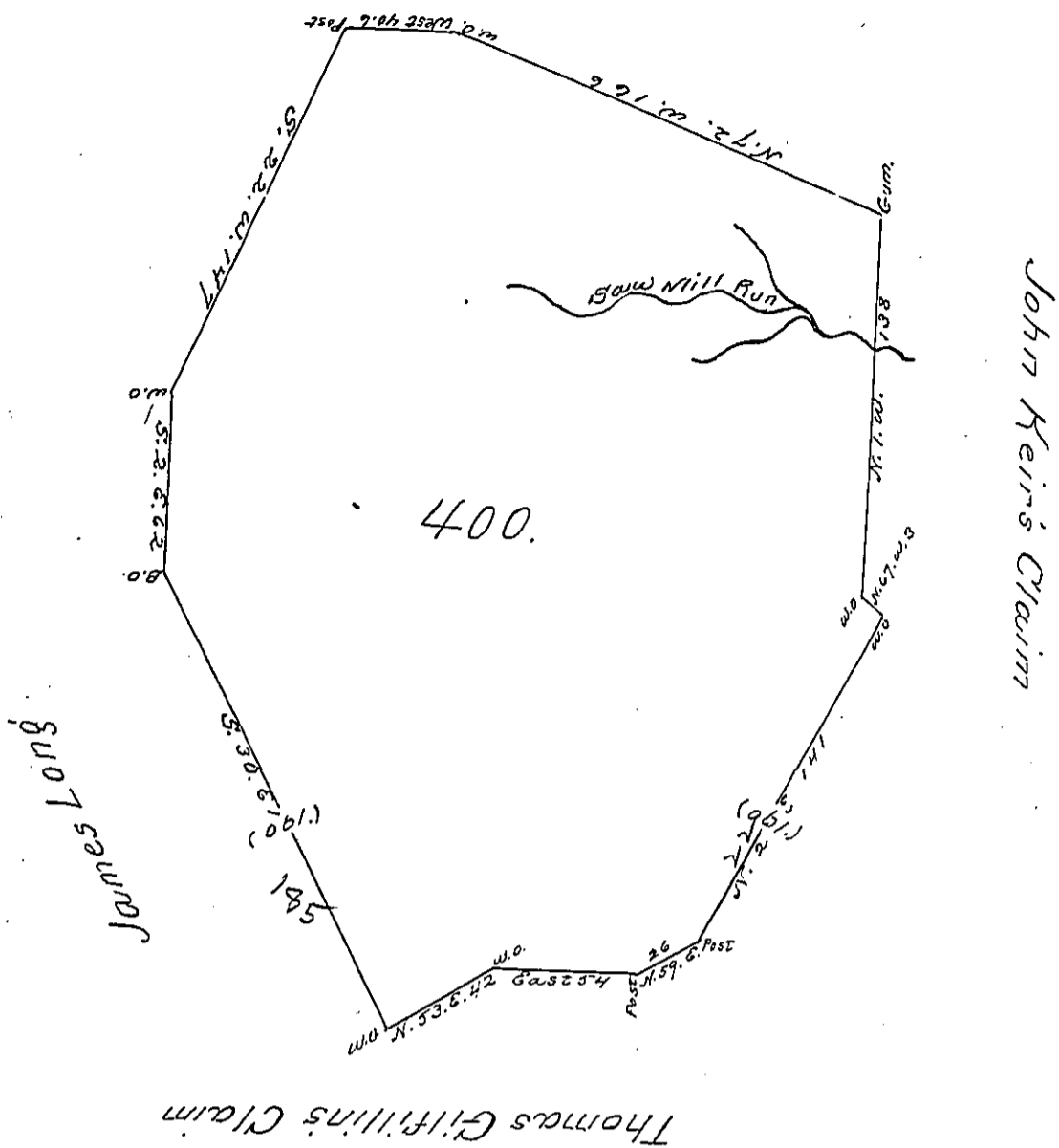


Not copied ✓ 170
544162
P10-132



The above is a Draught of Land surveyed 4th. ⁸⁵ May 17 (1785) on a Warrant granted 15th. February 1785 to Alexander Long It ^{is} called Silvia contains 400 acres with the usual allowance ^{and} is situated on the waters of Saw mill run Washington County

David Redick D.S.

To John Lukens Esq
Surv. Genl.

IN TESTIMONY that the above is a copy of the original remaining on file in the Department of Internal Affairs of Pennsylvania, made conformably to an Act of Assembly approved the 16th day of February, 1833, I have hereunto set my Hand and caused the Seal of said Department to be affixed at Harrisburg, this first day of January 1901

James W. Fatta
Secretary of Internal Affairs.